

FEBRUARY 2009

*gordon setter club  
of America inc.*

# ILLUSTRATED STANDARD



*Gordon  
Setter*

TEXT AS APPROVED BY THE  
BOARD OF DIRECTORS OF THE  
AMERICAN KENNEL CLUB

REPRODUCTION BY PERMISSION ONLY. ALL RIGHTS RESERVED BY THE GORDON SETTER CLUB OF AMERICA, INC., JUDGE'S EDUCATION COMMITTEE © 2009

## Table of Contents:

GENERAL APPEARANCE	2
SIZE, PROPORTION, SUBSTANCE	3
HEAD	4
NECK TOPLINE BODY	8
FOREQUARTERS	14
HINDQUARTERS	18
THE COAT	20
COLOR AND MARKINGS	21
GAIT	23
TEMPERAMENT	24
DISQUALIFICATION	25
WORKING BIRD DOG	26

## Acknowledgments:

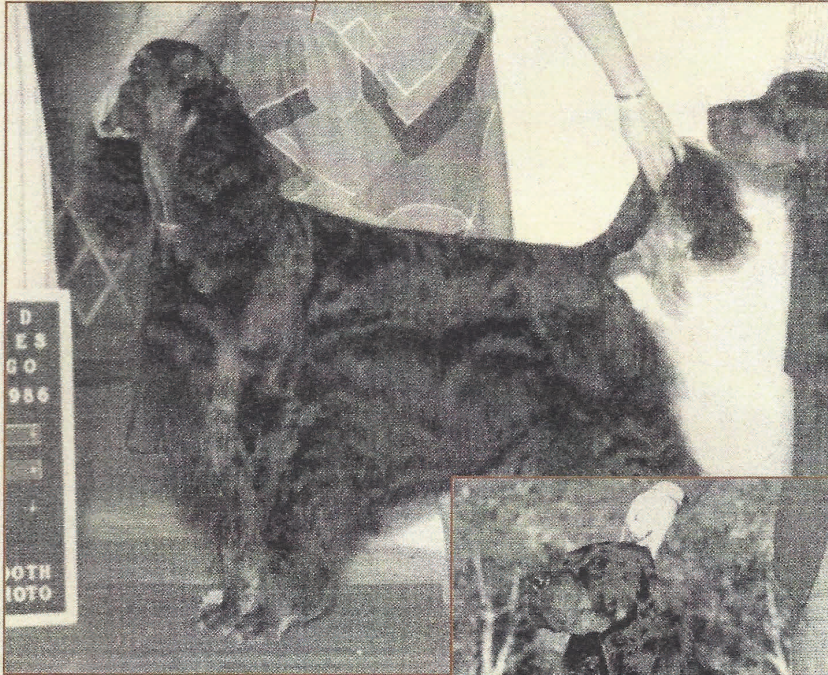
**D**rawings and sketches for this program have been contributed by Diane Klumb, Loree Ragano and Sue Sellers Rose.

## General Appearance:



**T**he Gordon Setter is a good sized, sturdily built, black and tan dog, well muscled, with plenty of bone and substance, but active upstanding and stylish, appearing capable of doing a full day's work in the field. He has a strong, rather short back, with well-sprung ribs and a short tail. The head is fairly heavy and finely chiseled. His bearing is intelligent, noble, and dignified, showing no signs of shyness or viciousness. Clear colors and straight or slightly waved coat are correct. He suggests strength and stamina rather than extreme speed. Symmetry and quality are most essential. A dog well-balanced in all points is preferable to one with outstanding good qualities and defects. A smooth, free movement, with high head carriage is typical.

## Size, Proportion, Substance:



**S**ize - Shoulder height for males, 24 to 27 inches; females, 23 to 26 inches. Weight for males, 55 to 80 pounds; females, 45 to 70 pounds. Animals that appear to be over or under the prescribed weight limits are to be judged on the basis of conformation and condition. Extremely thin or fat dogs are discouraged on the basis that under or overweight hampers the true working ability of the Gordon Setter. The weight-to-height ration makes him heavier than other setters.

Proportion - The distance from the forechest to the back of the thigh is approximately equal to the height from the ground to the withers.

3

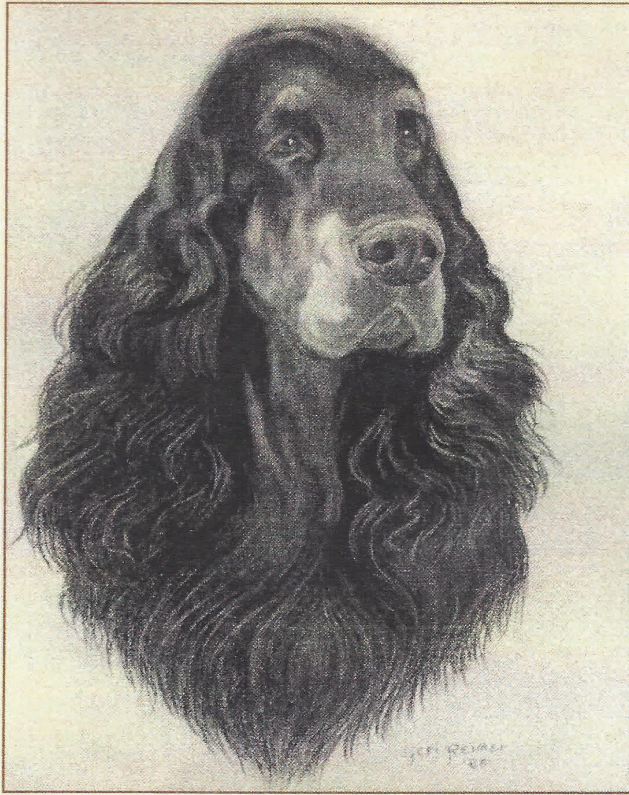
The Gordon Setter has plenty of bone and substance.

Head:



**HEADS:**  
Male - Female

## Head (cont.):



**H**ead deep, rather than broad, with plenty of brain room. Eyes - of fair size, neither too deep-set, nor too bulging, dark brown, bright and wise. The shape is oval rather than round. The lids are tight. Ears - set low on the head approximately on line with the eyes, fairly large and thin, well, folded and carried close to the head. Skull - nicely rounded, good sized, broadest between the ears. Below and above the eyes is lean, and the cheeks as narrow as the leanness of the head allows.

**ROUND EYE**



**CORRECT EYE**



*Eyes:*



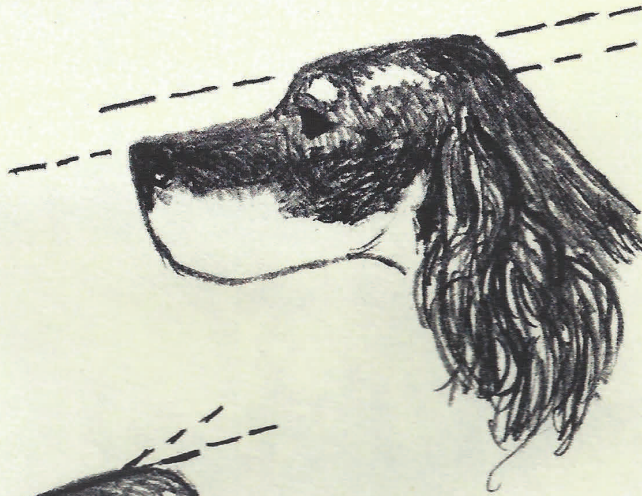
**EYE SHOWING HAW**



**EYE DEEP SET**

Head (cont.):

**CORRECT PLANES**

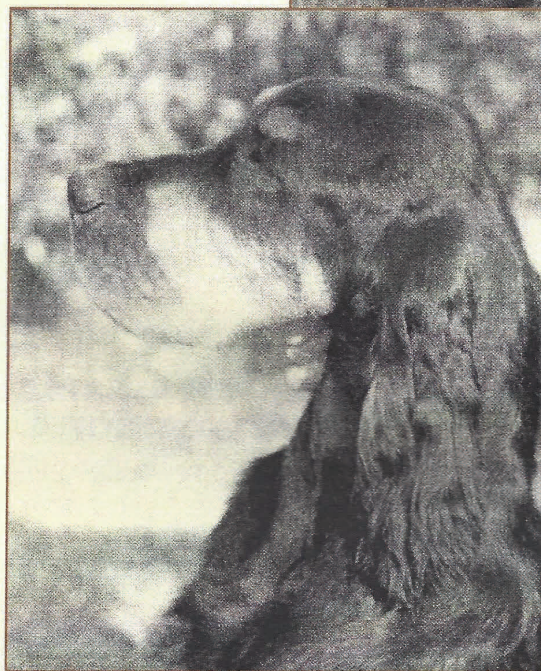


**PLANES NOT PARALLEL  
LACKING STOP**



**WIDE BACKSCULL  
MUZZLE TOO SHORT  
SHOWING TOO MUCH FLEW**

## Head (cont.):



**T**he head should have a clearly indicated stop. Muzzle - fairly long and not pointed, either as seen from above or from the side. The flews are not pendulous. The muzzle is the same length as the skull from occiput to stop and the top of the muzzle is parallel to the line of the skull extended. Nose - broad, with open nostrils and black in color. The lip line from the nose to the flews shows a sharp, well-defined, square contour. Teeth - strong and white, meeting in front in a scissors bite, with the upper incisors slightly forward of the lower incisors. A level bite is not a fault. Pitted teeth from distemper or allied infections are not penalized.

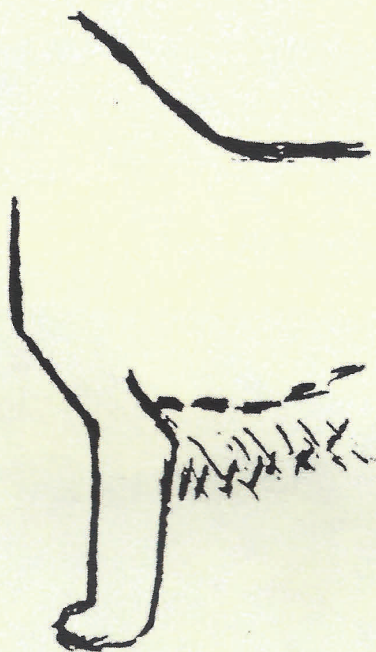


## Neck, Topline, Body:



**C**hest - deep and not too broad in front; the ribs well-sprung, leaving plenty of lung room. The chest reaches to the elbows. A pronounced forechest is in evidence. Loins - short and broad and not arched. Croup - nearly flat with only a slight slope to the tailhead. Tail - short and not reaching below the hocks, carried horizontal or nearly so, not docked, thick at the root and finishing in a fine point. The placement of the tail is important for correct carriage. When the angle of the tail bends too sharply at the first coccygeal bone, the tail will be carried too gaily or will droop. The tail placement is judged in relationship to the structure of the croup.

# Neck, Topline, Body (cont.):



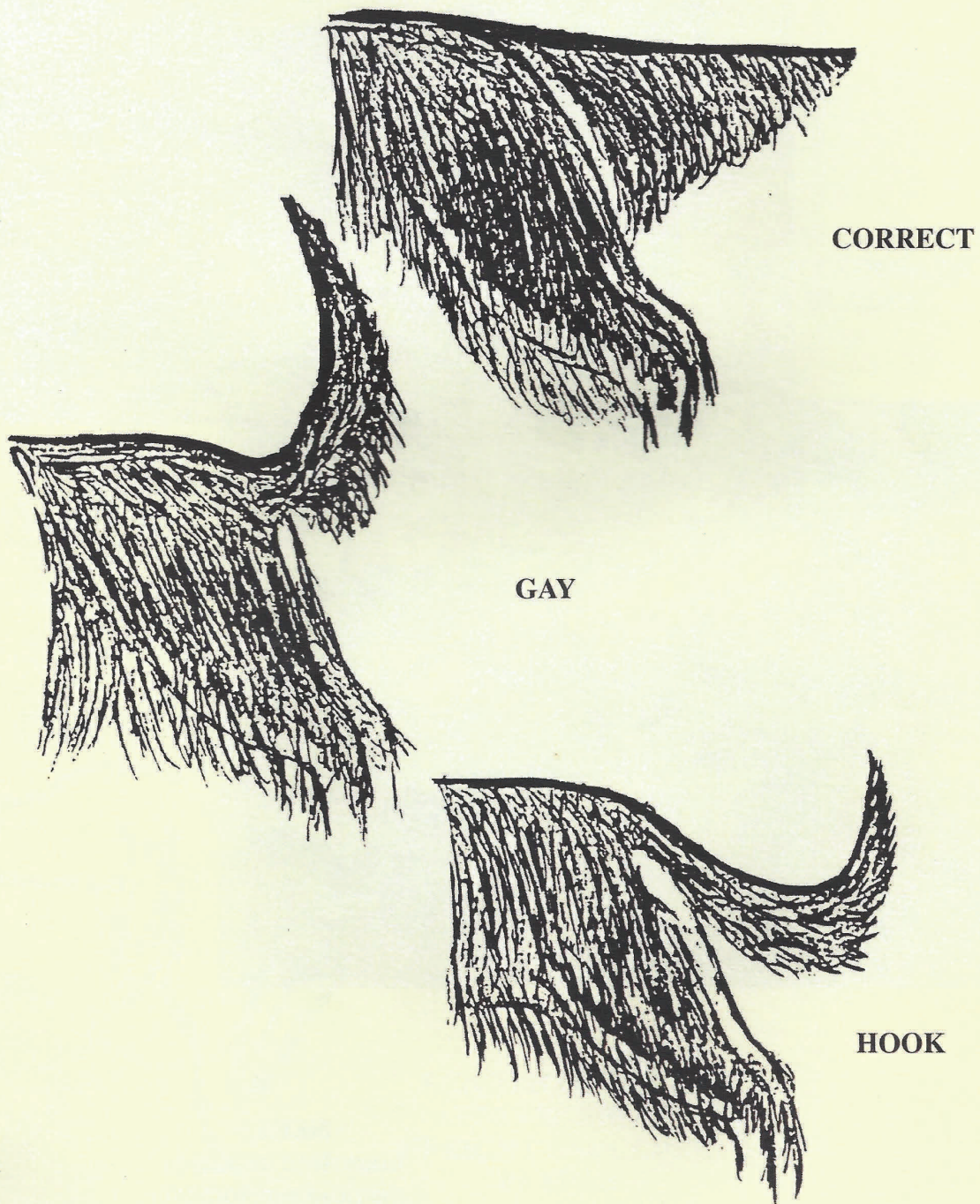
**ELBOWS ABOVE  
BRISKET LINE**



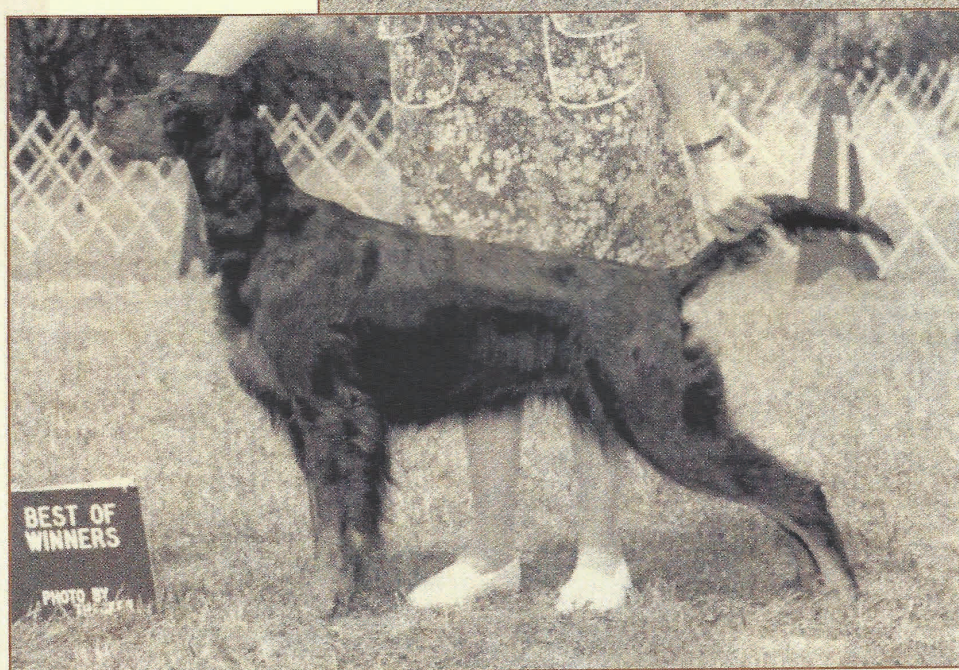
**ELBOWS WELL  
LET DOWN**

**BRISKET DEPTH SHOULD REACH  
TO THE ELBOW OR BELOW**

Neck, Topline, Body (cont.):



## Neck, Topline, Body (cont.):



**NECK:**  
Long, lean, arched to  
the head and without  
throatiness.

Neck, Topline, Body (cont.):



**WEAK EWE NECK  
SHORT SHOULDER  
BLADES**



**CORRECT NECK  
AND SHOULDER**



**LENGTH OF NECK  
APPEARS SHORT  
UPRIGHT SHOULDER  
BLADES**

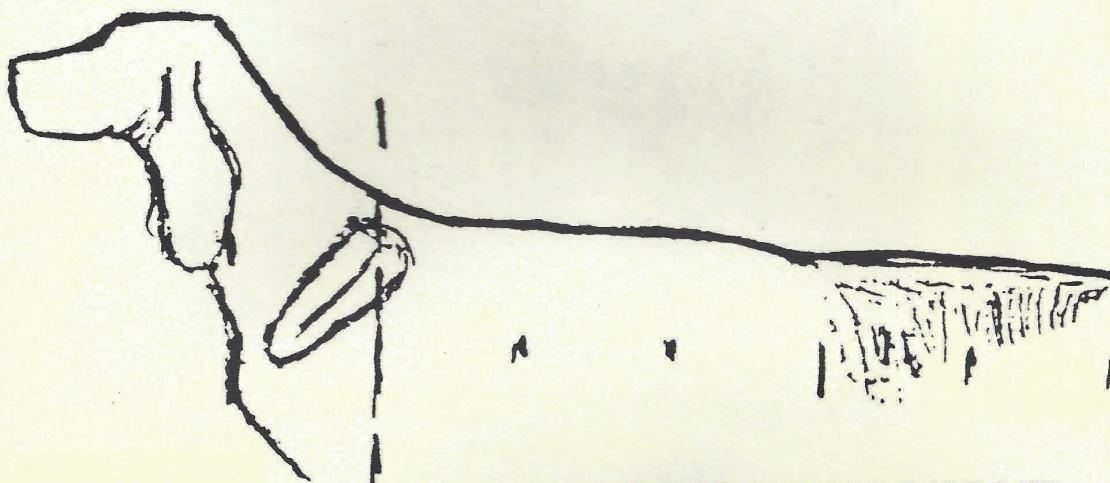
## Neck, Topline, Body (cont.):



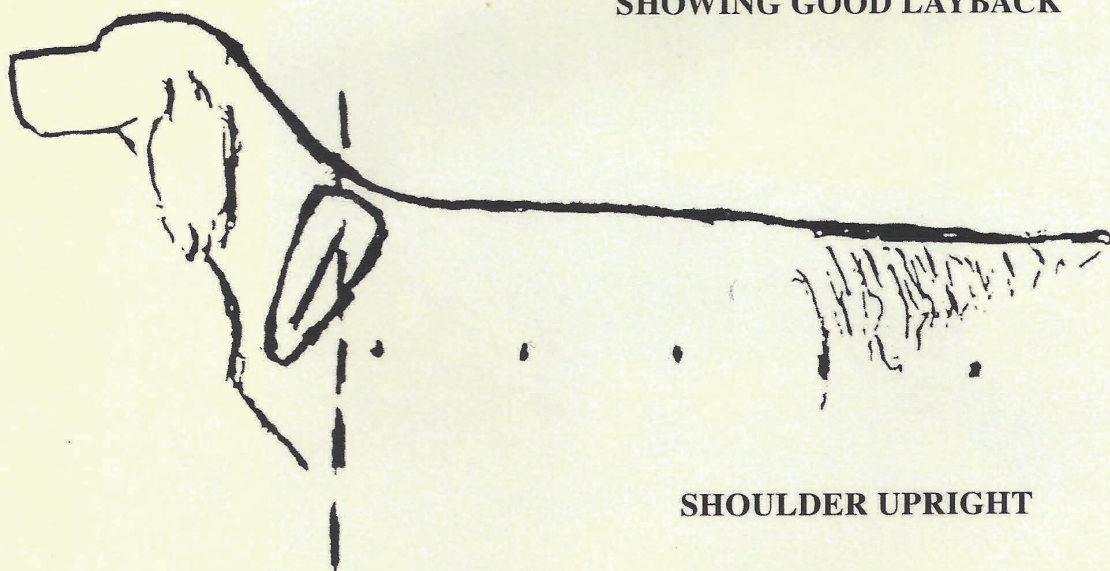
**TOPLINE:**  
Moderately sloping

**BODY:**  
Short from shoulder  
to hips

Forequarters:



SHOWING GOOD LAYBACK



SHOULDER UPRIGHT

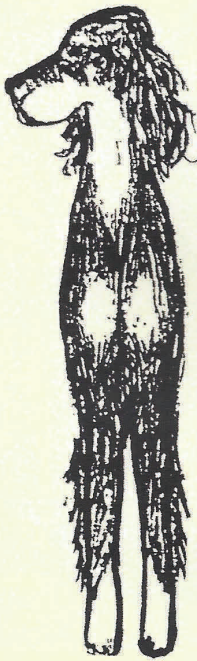
## Forequarters (cont.):



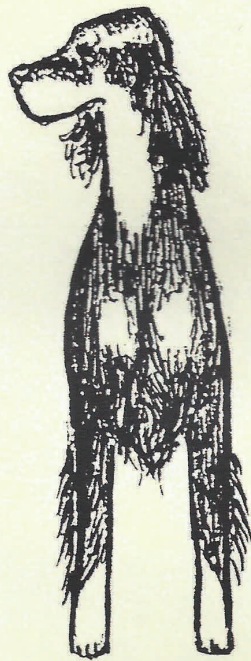
**S**houlders - fine at the points, and laying well back. The tops of the shoulder blades are close together. When viewed from behind, the neck appears to fit into the shoulders in smooth, flat lines that gradually widen from neck to shoulder.



Forequarters (cont.):



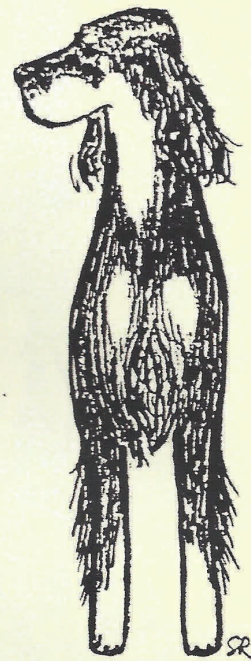
NARROW



WIDE



OUT AT ELBOWS



CORRECT



NARROW



COW HOCK

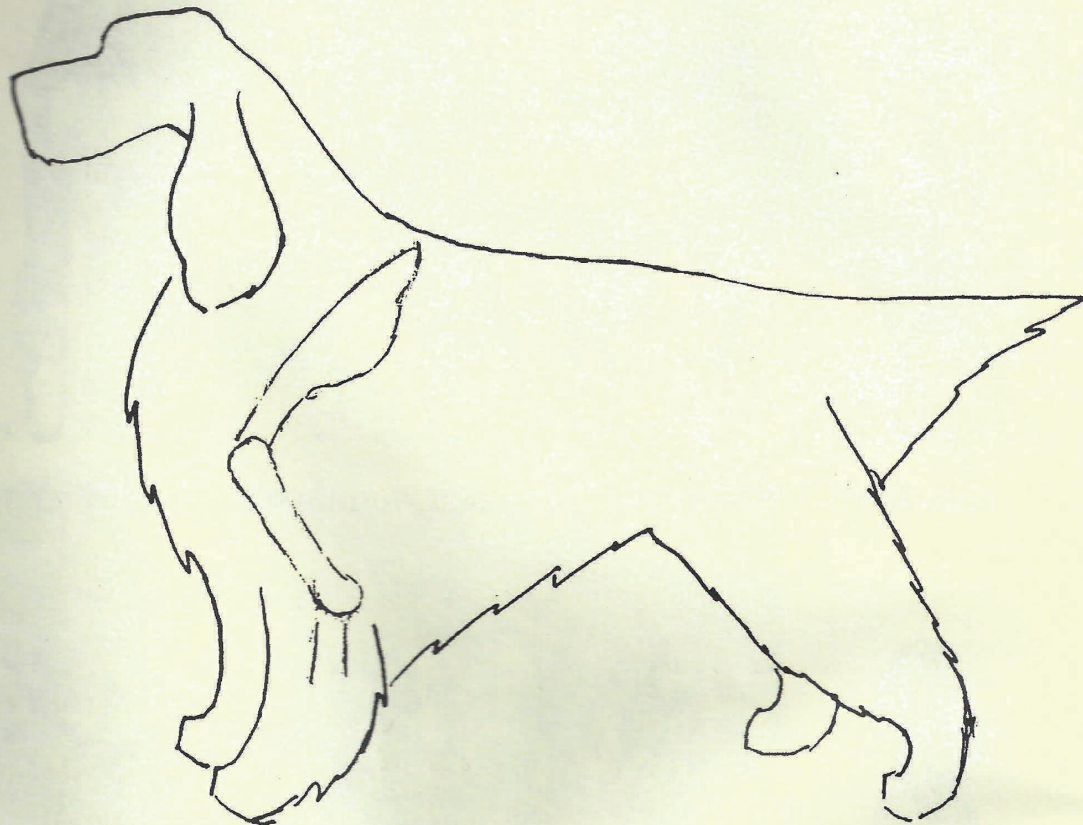


OPEN HOCK



CORRECT

## Forequarters (cont.):



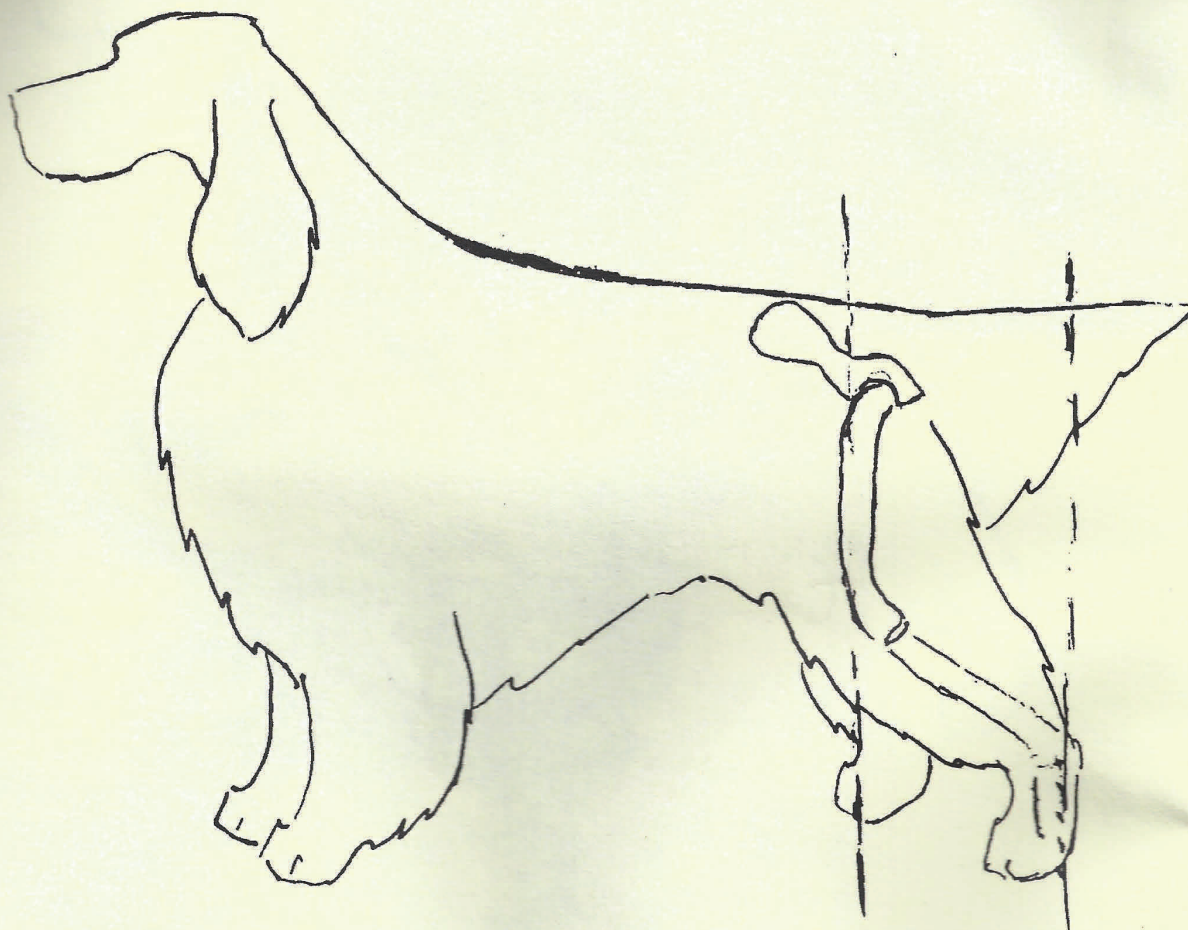
**T**he angle formed by the shoulder blade and upper arm bone is approximately 90 degrees when the dog is standing so that the foreleg is perpendicular to the ground. Forelegs - big boned, straight and not bowed, with elbows free and not turned in or out. Pasterns are strong, short and nearly vertical with a slight spring. Declaws may be removed. Feet - cat-like in shape, formed by close-knit, well-arched toes with plenty of hair between; with full toe pads and deep heel cushions. Feet are not turned in or out.

## Hindquarters:



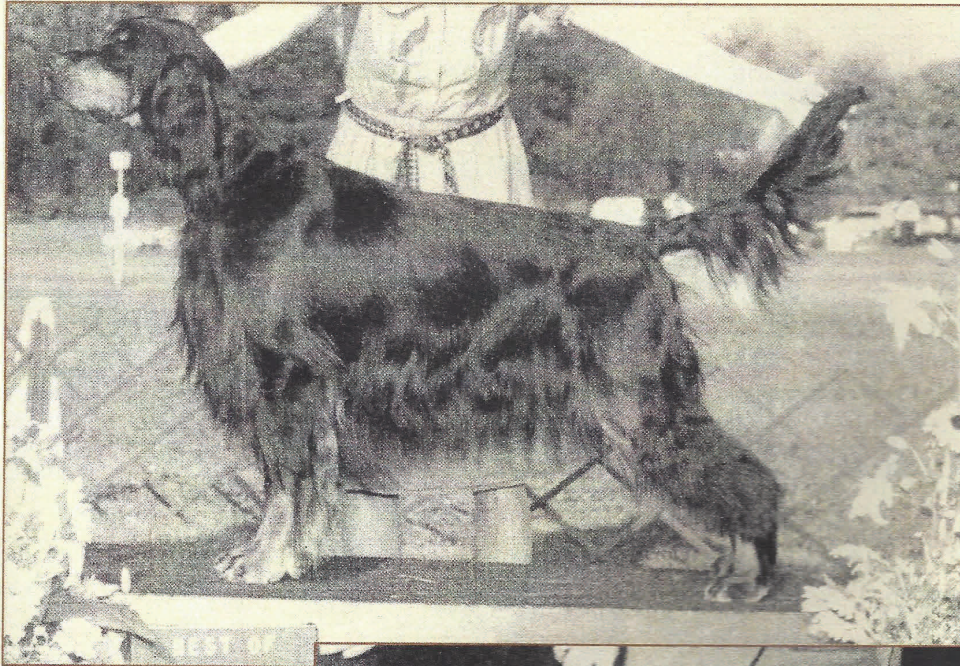
**T**he hind legs from hip to hock are long, flat and muscular; from hock to heel, short and strong. The stifle and hock joints are well bent and not turned either in or out.

## Hindquarters (cont.):



**W**hen the dog is standing with the rear pastern perpendicular to the ground the thigh bone hangs downward parallel to an imaginary line upward from the hock. Feet as in front.

## The Coat:



**S**oft and shining, straight or slightly waved, but not curly, with long hair on ears, under stomach and on chest, on back of the fore and hind legs and on the tail. The feather which starts near the root of the tail is slightly waved or straight, having a triangular appearance, growing shorter uniformly toward the end.

## Color & Markings:



**B**lack and tan markings, either of rich chestnut or mahogany color. Black pencilling is allowed on the toes.

- (1) Two clear spots over the eyes and not over three-quarters of an inch in diameter;
- (2) On the sides of the muzzle. The tan does not reach the top of the muzzle, but resembles a stripe around the end of the muzzle from one side to the other;
- (3) On the throat;
- (4) Two large clear spots on the chest;
- (5) On the inside of the hind legs showing down the front of the stifle and broadening out to the outside of the hind legs from the hock to the toes. It must not completely eliminate the black on the back of the hind legs;
- (6) On the forelegs from the carpus, or a little above, downward to the toes;
- (7) Around the vent;
- (8) A white spot on the chest is allowed, but the smaller the better.

Predominantly tan, red or buff dogs are ineligible for showing and undesirable for breeding.

# Color & Markings (cont.):



**HIGH IN COLOR**

**TOO DARK:**

Markings not seen clearly.



**HIGH IN COLOR**



## Gait:



**A** bold, strong, driving free-swinging gait. The head is carried up and the tail 'flags' constantly while the dog is in motion. When viewed from the front the forefeet move up and down in straight lines so that the shoulder, elbow and pastern joints are approximately in line. When viewed from the rear, the hock, stifle and hip joints are approximately in line. Thus the dog moves in a straight pattern without throwing the feet in or out. When viewed from the side the forefeet are seen to lift up and reach forward to compensate for the driving hindquarters. The hindquarters reach well forward and stretch far back, enabling the stride to be long and the drive powerful. The overall appearance of the moving dog is one of smooth-flowing, well-balanced rhythm, in which the action is pleasing to the eye, effortless, economical and harmonious.





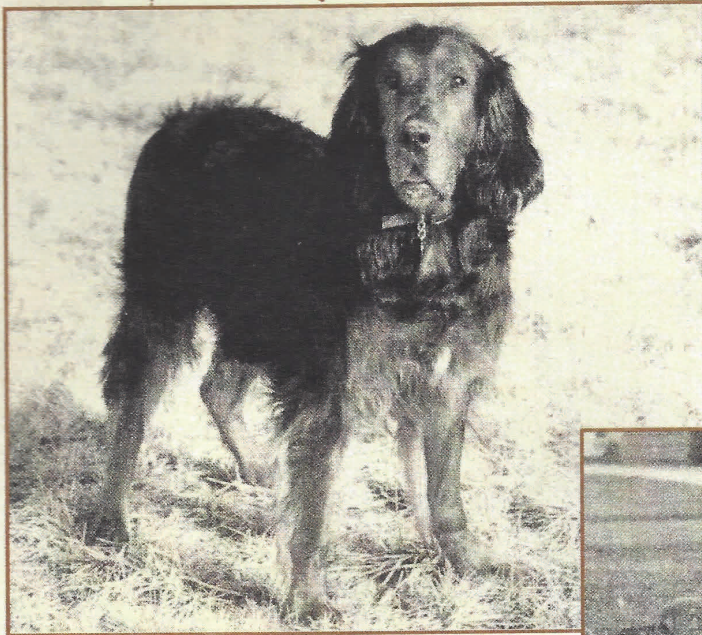
## Temperament:



**T**he Gordon Setter is alert, gay, interested, and confident. He is fearless and willing, intelligent and capable. he is loyal and affectionate, and strong-minded enough to stand the rigors of training.



# Disqualification:



## SCALE OF POINTS

To be used as a guide when judging the Gordon Setter:

Head and neck (incl. ears and eyes)	10
Body	15
Shoulders, forelegs, forefeet	10
Hind legs and feet	10
Tail	5
Coat	8
Color and markings	5
Temperament	10
Size, general appearance	15
Gait	12
<b>Total</b>	<b>100</b>



Predominantly tan, red  
or buff dogs.

## Working Bird Dog:



**I**t is important to remember that the way of going of each of the sporting dogs is determined by the type of cover it traditionally was bred to work. The Gordon first identified by Gervaise Markham in 1620 was described thus, “the black and fallow setting dog is hardest to endure labor”. Always a grouse dog, and always bred to work the thickest of cover, the Gordon must do the bulk of his work at the trot. A dog who does not pick up his feet before reaching out to put them down again in the brush will be unable to move. A galloping dog is worthless in grouse cover, which is buggy whip poplar, fallen logs and adler brush.